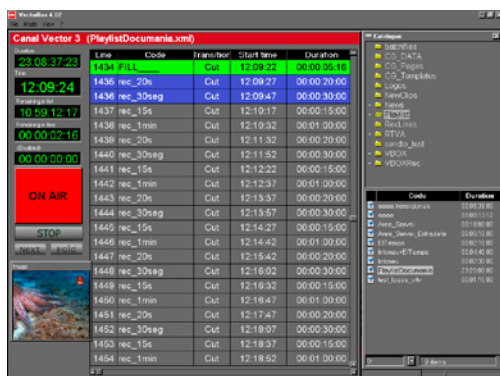


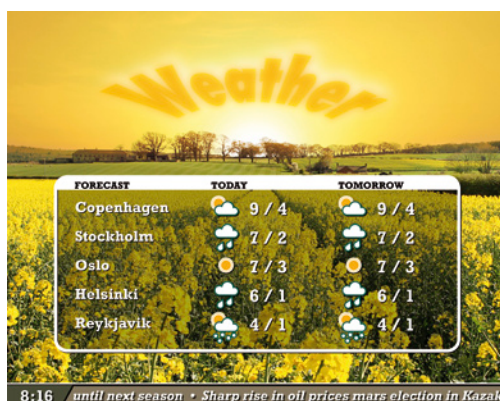
Total Playout

VECTORBOX DSX

- Playout automation
- Built-in video server & graphics
- Multi-format file support
- Low entry-level cost



VECTORBOX DSX playback interface



Graphic output

VECTORBOX DSX is an advanced all-in-one broadcast playout solution, engineered to manage 24/7 playout of content from disk, satellite and other feeds with full graphic branding. VECTORBOX DSX is the result of over 12 years continuous development with over 700 VECTORBOX customers worldwide.

VECTORBOX DSX makes use of new multimedia technology, Serial ATA storage and software based processes such as VGA trimming and browsing to create a lighter MCR playout ideal where entry-level costs are lower or numerous channels of playout are required on a limited budget.

Features include both SDI and analogue input and output, wide file-format and compression support for a completely tapeless environment and quality off-the-shelf local storage. Software options include SMS interactive functions for music and SMS chat channels and products for enhanced graphics, LAN compatibility and automated redundant failover.

OTHER VECTORBOX PRODUCTS

VECTORBOX 8000HD

High definition MCR playout

VECTORBOX 6000

Standard definition MCR playout

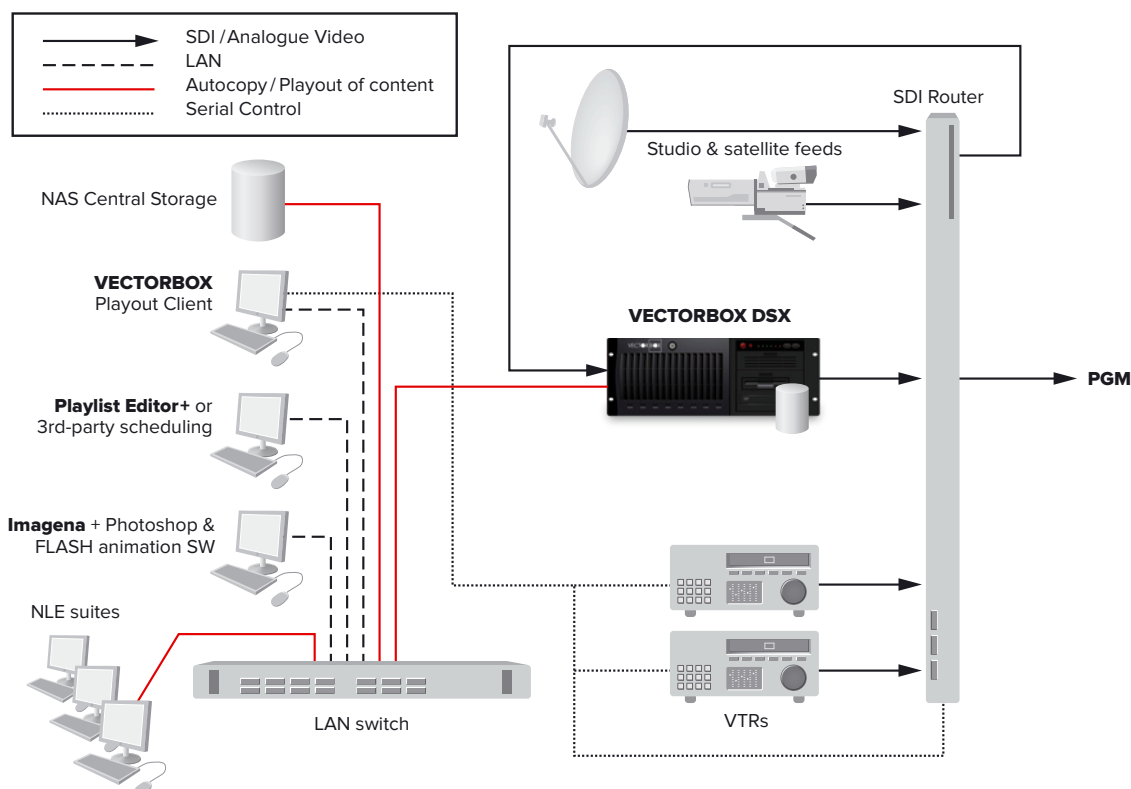
V-BOX News

News, studio and production playout

VECTORBOX Tatamia

SMS interactive and music channel playout

VECTORBOX DSX payout

**VECTORBOX Features**

- **NEW!** Multi compression format support: IMX30/50, DV25/50, MPEG2 I-frame and IBP mixed in the same playlist
- **NEW!** Multi file format support includes QuickTime from Final Cut Pro, MXF, raw DV and AVI from Avid, Sony and many other manufacturers
- Automated payout and ingest of content from built-in video server, live, VTR and satellite feeds, including remote satellite connection/disconnection and TDIR
- Dynamic channel branding, including logos, tickers, scrolls and Flash animations with real time RSS and XML data feeds from news agencies or other sources
- Gaps, warnings and missing media check with emergency clips and automatic redundancy failover
- Autocopy and direct payout from central storage for improved scalability, media sharing and faster media to air
- Proxy WM9 trimming and browsing on the LAN

SYSTEM SPECIFICATIONS

Video I/Os 1 SDI /analogue input and 1 SDI /analogue output

Audio I/Os 8 embedded or 3 pairs AES/EBU or 3 pairs of analogue audio

IPTV Os 1 WM9/QuickTime file stream or file series

Compression Support DV25/50, MPEG2 I-frame & IBP, IMX30/50

File Format Support QuickTime from Final Cut Pro, MXF, raw DV and AVI from Avid, Sony and others

Storage Capacity 0.5-2TB RAID 5, upgradeable