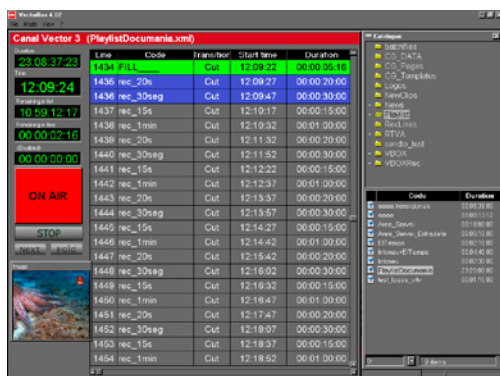


Total Playout

VECTORBOX 6000

- Playout automation
- Built-in video server
- Built-in graphics
- Multi-format file support



VECTORBOX playout interface



Graphic output

VECTORBOX 6000 is the original all-in-one playout solution with a built-in automation, video server and CG. Over 12 years of continuous development with more than 700 TV channels worldwide makes VECTORBOX the ultimate channel in a box solution available today, at a surprisingly affordable cost.

VECTORBOX advanced master control room automation gives you the power to manage every transmission function in your channel, from ingest and playout of content from disk, live, VTR and satellite, to channel branding and file and redundancy management, all from one single 4RU box.

No more worries about file formats. VECTORBOX supports all industry compression and file formats and guarantees file-based workflows with a variety of third-party systems (NLEs, content management, etc.) Also, a unique system architecture means ingest and playout can be direct from a central NAS storage over LAN and controlled by dedicated client PCs on the same network.

Every scalable VECTORBOX is built over a best-in-class hardware platform and comes with one to four SDI video outputs with fully automated redundant switchover. Hardware options include a range of quality off-the-shelf local storage, and software options include SMS interactive functions for music and chat channels, media asset management and products for enhanced graphics and LAN compatibility.

Other VECTORBOX Products

VECTORBOX 8000HD

High definition MCR playout

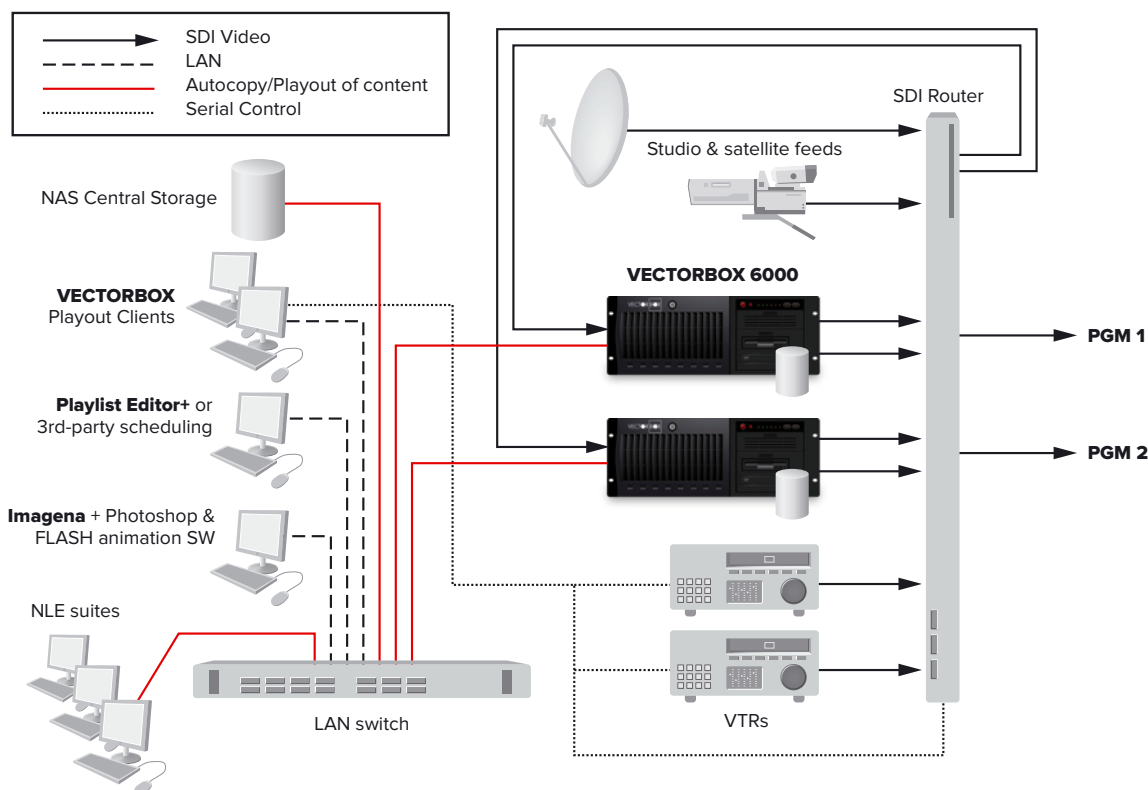
V-BOX News 6000

News, studio and production playout

VECTORBOX Tatamia

SMS interactive and music channel playout

VECTORBOX multichannel payout

**VECTORBOX Features**

- **NEW!** Multi compression format support: IMX30/50, DV25/50, MPEG2 I-frame and IBP mixed in the same playlist
- **NEW!** Multi file format support includes QuickTime from Final Cut Pro, MXF, raw DV and AVI from Avid, Sony and many other manufacturers
- Automated playout and ingest of content from built-in video server, live, VTR and satellite feeds, including remote satellite connection/disconnection and TDIR
- Dynamic channel branding, including logos, tickers, scrolls and Flash animations with real time RSS and XML data feeds from news agencies or other sources
- Gaps, warnings and missing media check with emergency clips and automatic redundancy failover
- Autocopy and direct playout from central storage for improved scalability, media sharing and faster media to air
- Proxy WM9 trimming and browsing on the LAN

SYSTEM SPECIFICATIONS

Video I/Os 1 to 2 SDI inputs and 1 to 4 SDI outputs

Audio I/Os 8 embedded or 2 pairs AES/EBU with support for Dolby E

IPTV Os 1 WM9/QuickTime file stream or file series

Compression Support DV25/50, MPEG2 I-frame & IBP, IMX30/50

File Format Support QuickTime from Final Cut Pro, MXF, RAW DV and AVI from Avid, Sony and others

Storage Capacity 0.5-2TB RAID 5, upgradable